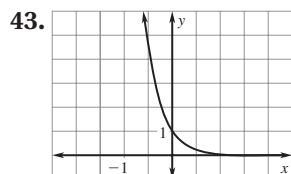
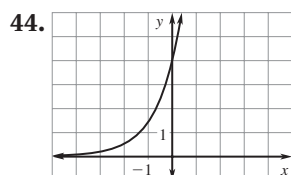


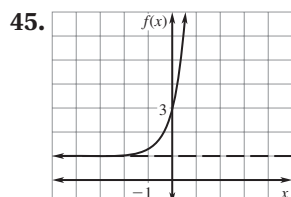
7.7 Mixed Review (p. 536)



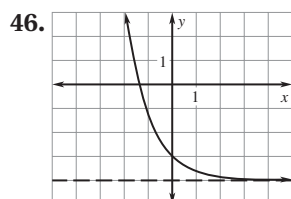
domain: all real numbers,
range: $y > 0$



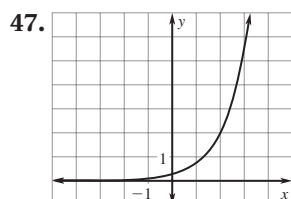
domain: all real numbers,
range: $y > 0$



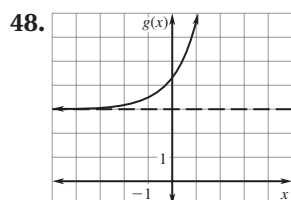
domain: all real numbers,
range: $y > 1$



domain: all real numbers,
range: $y > -4$



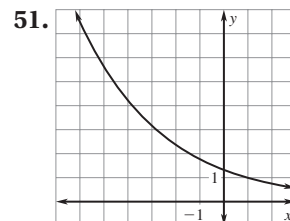
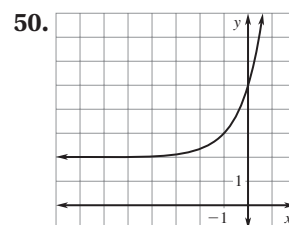
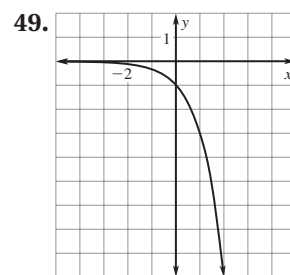
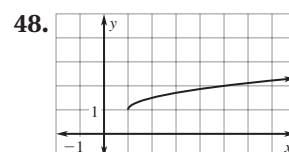
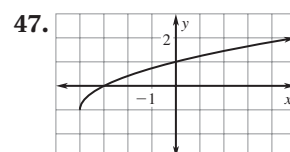
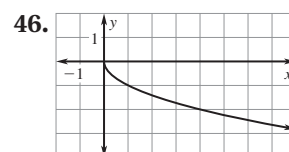
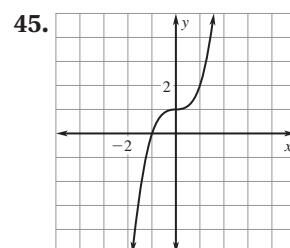
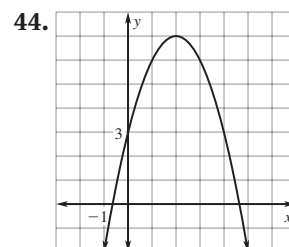
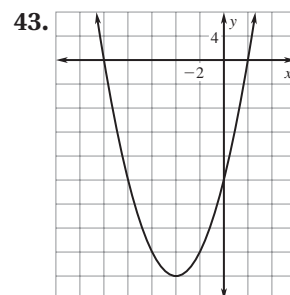
domain: all real numbers,
range: $y > 0$



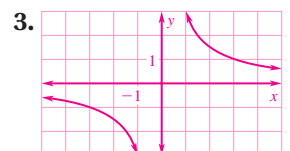
domain: all real numbers,
range: $y > 3$

Chapter 8

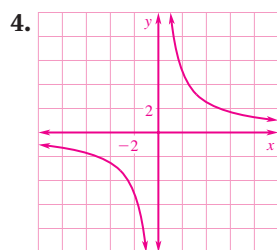
8.1 Mixed Review (p. 557)



8.2 Skill Practice (pp. 561–562)



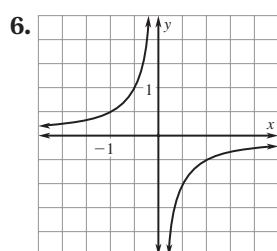
The graph lies farther from the axes than the graph of $y = \frac{1}{x}$. Both graphs lie in the 1st and 3rd quadrants and have the same asymptotes, domain, and range.



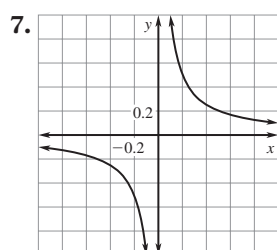
The graph lies farther from the axes than the graph of $y = \frac{1}{x}$. Both graphs lie in the 1st and 3rd quadrants and have the same asymptotes, domain, and range.



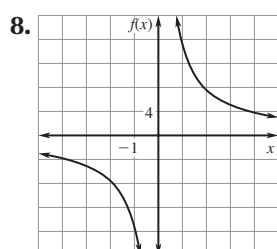
The graph lies farther from the axes than the graph of $y = \frac{1}{x}$ and is located in quadrants 2 and 4. Both graphs have the same asymptotes, domain, and range.



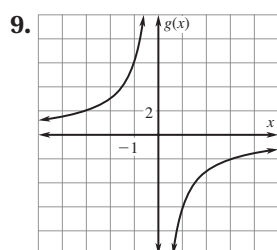
The graph lies closer to the axes than the graph of $y = \frac{1}{x}$. Both graphs lie in the 1st and 3rd quadrants and have the same asymptotes, domain, and range.



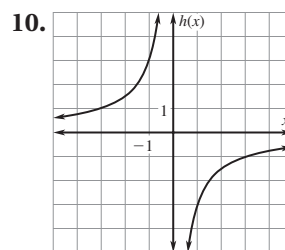
The graph lies closer to the axes than the graph of $y = \frac{1}{x}$. Both graphs lie in the 1st and 3rd quadrants and have the same asymptotes, domain, and range.



The graph lies farther from the axes than the graph of $y = \frac{1}{x}$ and is located in quadrants 2 and 4. Both have the same asymptotes, domain, and range.



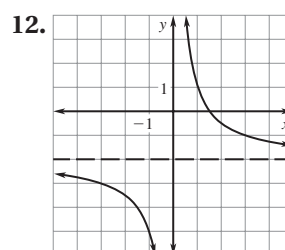
The graph lies farther from the axes than the graph of $y = \frac{1}{x}$ and is located in quadrants 2 and 4. Both graphs have the same asymptotes, domain, and range.



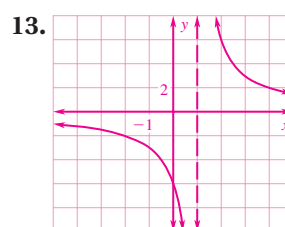
The graph lies farther from the axes than the graph of $y = \frac{1}{x}$ and is located in quadrants 2 and 4. Both graphs have the same asymptotes, domain, and range.



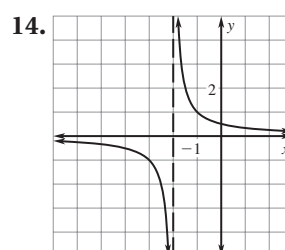
domain: all real numbers except 0, range: all real numbers except 3



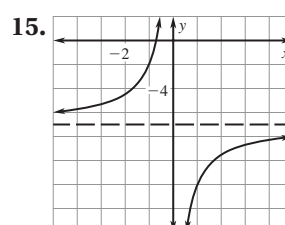
domain: all real numbers except 0, range: all real numbers except -2



domain: all real numbers except 1, range: all real numbers except 0



domain: all real numbers except -2, range: all real numbers except 0



domain: all real numbers except 0, range: all real numbers except -7